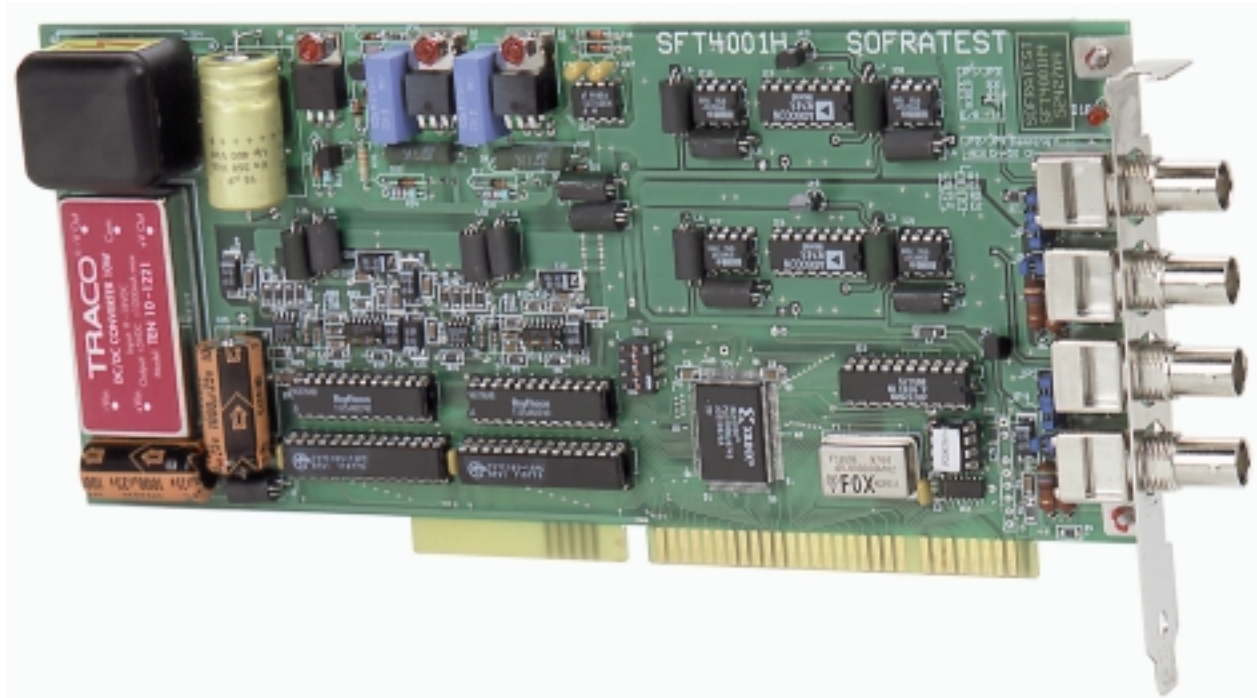


SFT 4001H

ISA bus

ULTRASONIC PROGRAMMABLE PC BOARD DUAL CHANNEL with A/D CONVERTER



- * 2 pulsers and 2 receivers on one board
- * 2 simultaneous channels 8 bits A/D converters
- * Suitable for applications and developments in industrial and medical domains.
- * Comes with software for immediate settings
- * Microsoft C libraries and Windows available
- * **Ideal for OEM applications, multichannel operation**

4001H ISA bus

ON EACH CHANNEL :

PULSER SECTION

- Type : negative square pulse
- Amplitude : 200 V or 50 V programmable
- Repetition frequency (PRF) : up to 10 KHz programmable (single shot under software control)
- Pulse width : 50 ns to 775 ns (25 ns step) at 50% amplitude
- Connectors : 4 BNC sockets (2 per channel)
- Damping : 50 Ω or 470 Ω jumper selectable

RECEIVER SECTION

- Bandwidth : 0.1 to 15 MHz
Std : 2 MHz to 7 MHz at -6 dB filtered
- Gain : 6 dB to 70 dB (step 0.3 dB)
Dynamic range 80 dB measured at 5 Mhz
- Input voltage : 2 Vpp.(before saturation)
- Analog signal processing : Double rectified
Suppression (0 to 10% of full screen) = 0 to 200 mV programmable

MODE

- : Pulse echo or transmission, jumper selectable

SIGNAL PROCESSING

- : 8 bits A/D flash converter 40 MHz (2 each)

TRIGGER

- : Post trigger 0 to 409 μs in 50 ns step
- : Trigger on initial pulse of channel A or channel B

MEMORY

- : 8 Kb buffer per channel fully addressable

MONITOR

- : 2 individual gates per channel programmable separately
- Delay 0 to 204 μs in 50 ns step
- Width 0 to 102 μs in 25 ns step
- Peak value per gate
- Amplitude 8 bits

INTERRUPT LEVEL

- : IRQ 5

BASE ADDRESS

- : H 300 + card N° (1 to 16) for all functions up to 16 cards in parallel (32 channels)

POWER SUPPLIES

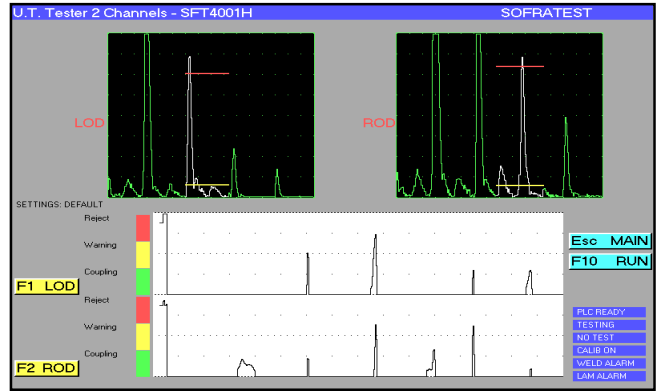
- : Uses only +5V +12V

SIZE

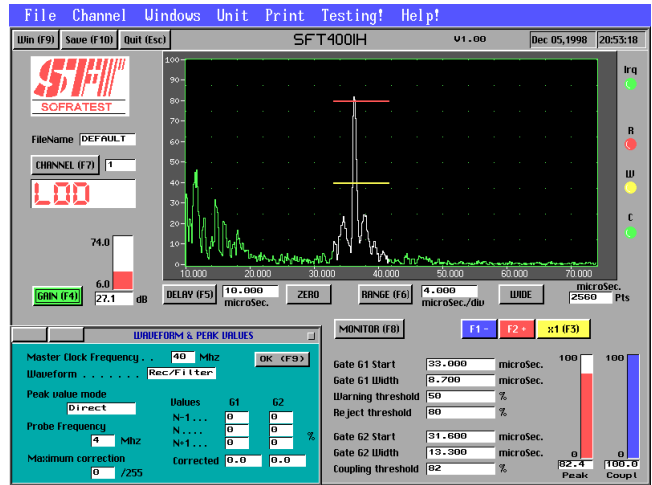
- : Slot 8/16 bits ISA bus length 220 mm
- Height solder side : 3 mm
- Height component side : 24 mm

OPERATING TEMPERATURE : 0 to 40°C in computer.

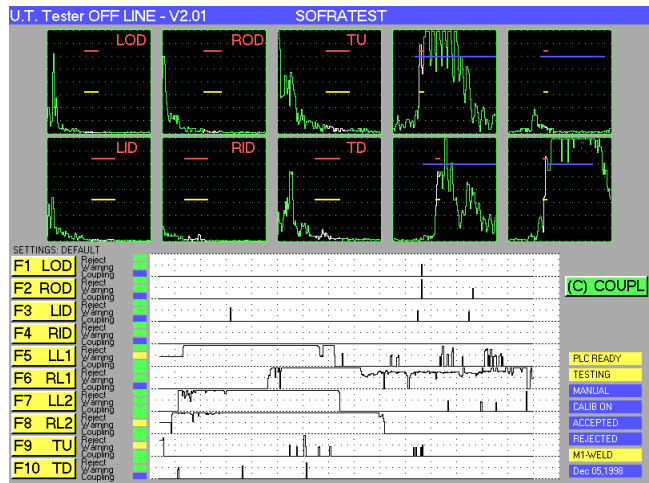
Local Agent



Real time signal variation



Individual channel settings



10 simultaneous channels with 10 real time A-Scan - PRF 2000 Hz per channel "Strip chart record" mode of amplitude in gate

Specifications subject to change