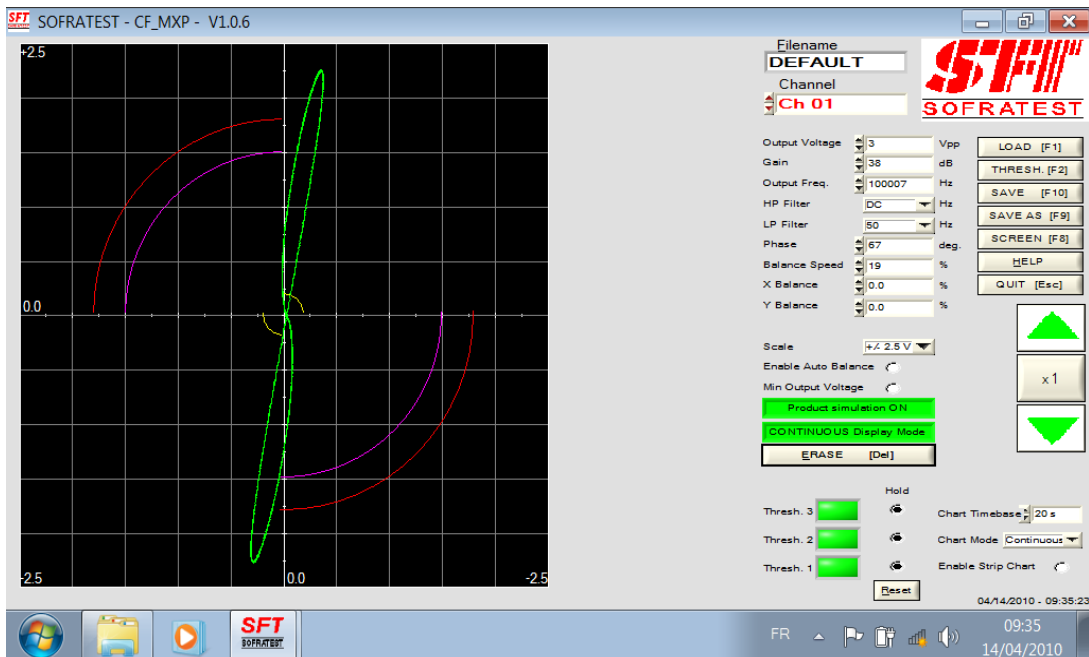


SFT 6000USB

USB2 Eddy Current PC board



SFT6000USB Features

FREQUENCY RANGE	Digital oscillator : 1 KHz up to 5 MHz in minimum steps of 100 Hz
OUTPUT VOLTAGE	Output via wideband transformer – Floating output independent of probe configuration. Bandwidth : 5 MHz at -1dB. Amplitude range : 1 – 10 Vpp; software selectable in steps of 1 Vpp. Output impedance : 11 Ohms Output connector : SubD 9 pins female.
RECEIVER	Bandwidth : 6 MHz at -3dB. Gain : - Software variable gain : from 28 to 68 dB in 1 dB steps. Noise : 75 mVpp on X & Y (at 62 dB gain, input shorted) Automatic balance.variable speed Permanent balance : software selectable balance speed from 1 to 100%. Residual modulation : compensation at the input : 360 mVpp.
FILTERS	Two software selectable filters on each channel (X & Y). High-pass filter : DC – 2.5 – 10 – 25 – 55 – 100 – 250 – 500 Hz (differentiation). Low-pass filter : 20 – 50 – 100 – 500 Hz (integration).
SIGNAL ANALYSIS	Polar display of phase and amplitude. Synchronous demodulator – Bandwidth : 500 Hz at -3 dB. Phase rotation : software selectable 0-360°. - Clockwise in 1° or 10° steps. - Counter clockwise in 1° steps.
A/D CONVERTER	Output data : X and Y 12 bits conversion available
INPUTS	Product presence signal : ON/OFF selectable by software. Opto-coupler input : 0-24 Vdc.
SIZE	external dimensions 225x105x30 L x W x H .
POWER SUPPLY	USB2 +5 V and External DC 12V (supplied) . Automatic cooling by internal fan
SOFTWARE	C drivers and libraries for Windows XP , Windows 7 Installation program Test menu Application Software with Polar and Chart mode ECMX SOFRATEST optionally offers a variety of industrial grade applications software for the SFT6000 family of boards. Further details are available from SOFRATEST.
OPERATING TEMPERATURE:	0 to 40°C