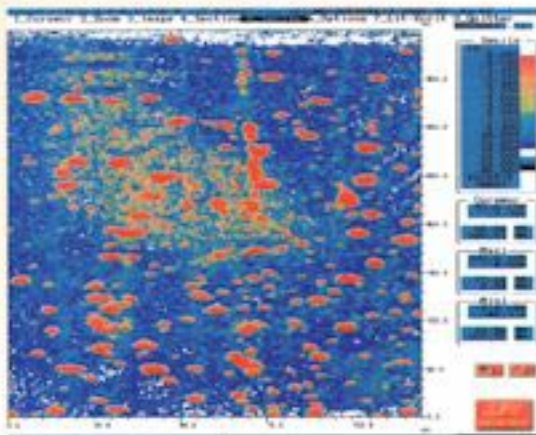


## ➤ Application



*Sofrascan uses flexible track, here mounted on 700mm OD pipe -*

- Erosion/corrosion inspection.  
⇒ Thickness detection and mapping.
- Weld inspection.
- Flaw detection.



*-corrosion C-scan -*

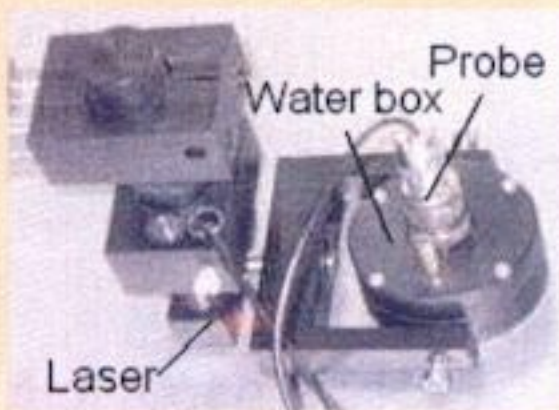
## ➤ Main features

- Robust portable system for inspecting materials by ultrasounds.
- Two motorized axes, stepping motor technology.
- Stroke X direction : 1000 mm (index axis, base configuration)
- Stroke Y direction : 300 mm (scan axis).
- Position resolution up to 0.05 mm.
- Position accuracy typically X and Y axis- /+ 0.1 mm.
- Speed range : X direction 30 mm/s.  
Y direction 120 mm/s.
- Only one suitcase includes mechanical and ultrasonic parts



*-IP54 remote suitcase -*

- Special holder is designed for water coupling device



-holder view-

- Preformed ring rails, wide size range (230 – 580 mm OD )  
⇒ Track uses magnet or vacuum for stable mechanical positioning.

### ➤ Ultrasonics features

- Complete device intended for ultrasonic imaging  
B-Scan, C-Scan and T.O.F.D
- Uses any of the following Softratec cards:

⇒ SFT4001C, SFT4001G,  
SFT4001H (2 UT channels)

- 100 MHz digitizer board.

### ➤ Multipurpose device

Used with flexible or rigid track ;  
operator can control many kinds of surfaces.

⇒ wear resistant, stainless steel.



-Sofrascan on Aluminium plate -

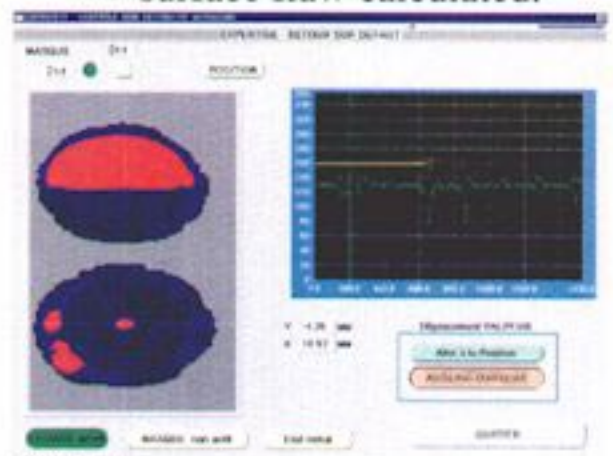
- Rigid rail ( 2.30 m or 1.10 m ).  
⇒ extension plate can be mounted at one end of each track for joining to additional track.

- Flexible track can be used on concave or convex surfaces  
(length 1.50 m, min Ø 600mm )



-Ultrasonic setting's window-

- Special function (optional):  
⇒ return on defect.  
⇒ surface flaw calculated.



-Return on defect window-