

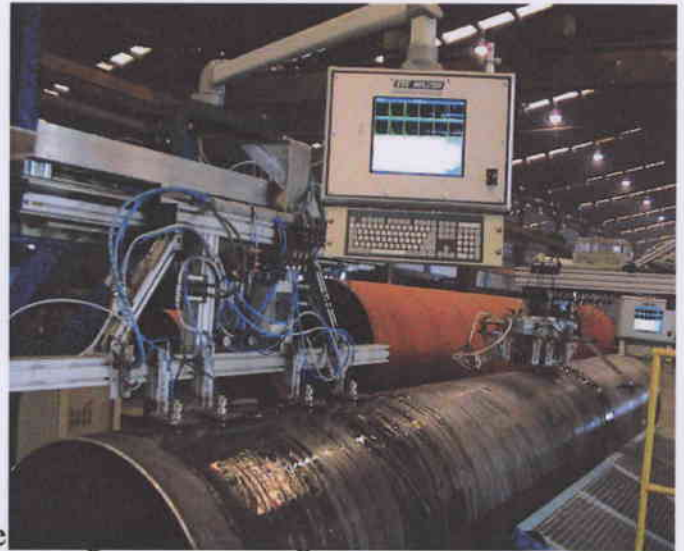


SAW LINEAR or SPIRAL & ERW WELDED TUBES

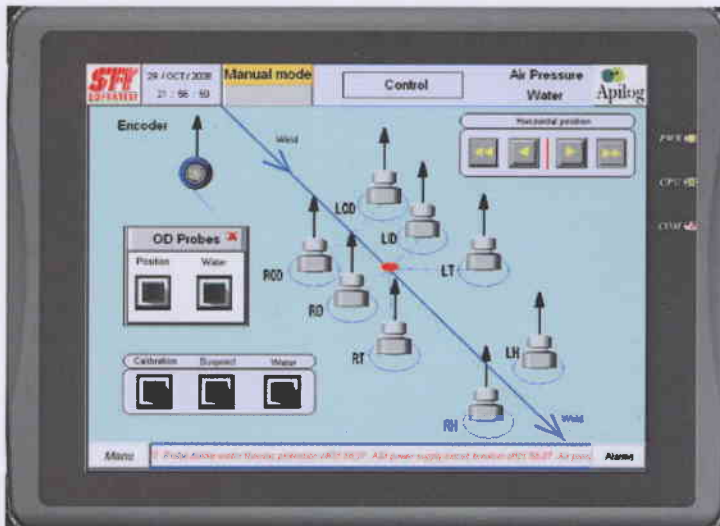
Ultrasonic examination up to 32 channels *Real Time Strip-Chart and Full trace ability*

Applied standard :

- External defects
 - + Internal defects
 - + HAZ delamination and full body
 - + Couplant monitoring at each shot
- API5L – 2000
 - ARAMCO – SHELL
 - ISO 3183
 - alarms monitoring
 - defects marking
 - high PRF capability



Perfectly adapted to Mill On-Line and Off-Line with highly integrated components for high speed use. Complete digitized channels per card.



Retrofit of old installations.
Process network link (Tracking System).
Connection to PLC for automatisisation.

Contact us; we also supply complete mechanical devices for ON-LINE and OFF-LINE testing.

Turnkey systems for all production inspection fully automatised.



**TUBE 2012
Booth 6F49**

SOFRATEST Z.I. du Petit Parc - 78920 Ecquevilly –France
Tel : + 33 1 34 75 50 00 - Fax : + 33 1 34 75 53 41 - E-mail : sales@sofratest.com
Website : <http://www.sofratest.com>