

# SAW SPIRAL PIPE OFF LINE UT WELD INSPECTION

The weld test can be done off-line. The system is able to work in longitudinal and transversal inspection. The system is used for flaw detection.

## Pipe manufacturing range :

Pipe diameter range : 500mm to 3000mm  
 Wall thickness range : 5mm to 25mm  
 Coil width range : 900mm to 2000mm

## The system includes :

- 8 UT probes (60° Shear wave probe)
- Multi-channel UT system :
  - Measurement cycle : high PRF up to 1000 Hz for each channel
  - Simultaneous defect detection and Coupling check
- Fully programmable settings
- Marking on pipe for :
  - Flaw detection
  - Loss of coupling
- Mechanical head and probe holder on adjustable platform
- Data capture :
  - First printout : produce scanning information for each probe
  - Second printout : summary report and full report, traceability of each defect or loss of coupling detected for the complete weld
  - Storing on CD-Rom
  - Network link

## Meets specifications :

API 5L 2000  
 ISO 3183-3  
 ARAMCO  
 .....

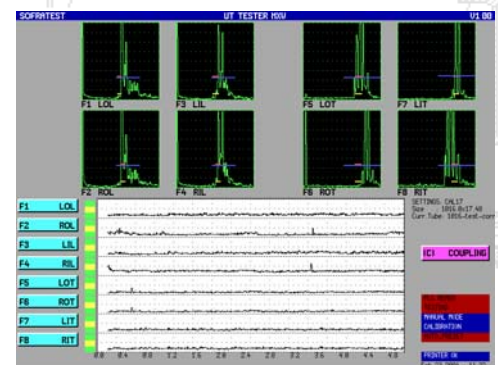


Mechanical Head 8 probes

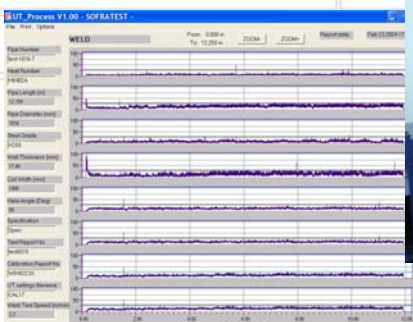
- Probes detect N5 notches and diameter 1.6mm through holes as described in API-5L in the longitudinal and transversal direction
- Vertical probe coverage :  $\geq 50\%$  of the wall thickness



Weld Inspection System and Remote Control



Multi-channel UT system event envelope linked to inspection speed



PC\_Process – Length of storage up to 700m

## Environment

The UT system is designed to be placed very close to possible noise source (Welding machines, frequency inverters...).

The possible electromagnetic interference peaks are lowered and not detected. Besides, the system can operate in difficult conditions (room temperature up to 50°C and humidity up to 98%).