

ERW PIPES ULTRASONIC ON-LINE STRIP DELAMINATIONS MONITORING

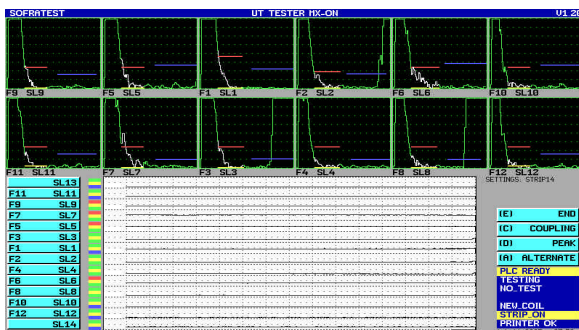
The Strip delamination inspection system is placed before the forming cage and provides on line full automatic examination. It is designed to work, in harsh environment, just after the milling machine. The system works in parallel mode and allows detecting the defects at 50% of the wall thickness, with a reference standard for calibration as a FBH of 5 or 6.25mm. The coverage is typically 25% of the surface. This avoids usually to retest as full body and save time in production.

Tube manufacturing range :

Pipe diameter range: 4" to 24"-114.3 to 600mm
Wall thickness range: 3.5 mm to 16 mm

The system includes :

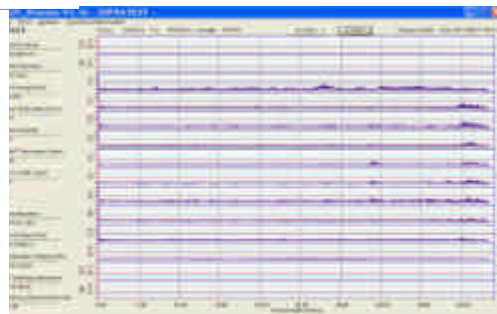
- Multiprobes Mechanical head
- Individual coupling control
- high stability
- Lateral adjustment of each channel



Measurement screen

Software :

- UT settings
- thickness measurement
- rejects alarm on defects
- coupling check alarm at each shot
- automatic printing function
- automatic full record
- tracking connection capability



Full Trace ability

Environment

The UT system is designed to be placed very close to possible noise sources (welder, seam annealer, frequency inverters...)

The possible electromagnetic interference peaks are lowered and not detected. Besides, the system can operate in difficult conditions (room temperature up to 50°C and humidity up to 98%).

KCU060B