

STRIP EDGE LAMINATION INSPECTION BY ULTRASONIC METHOD

The Edge test can take place just before the welding during the pipe manufacturing process. The control is done under the coil strip on both sides. The system is used to check lamination.

Pipe manufacturing range :

Any coil width range
Thickness range : 5mm to 25mm

The system includes :

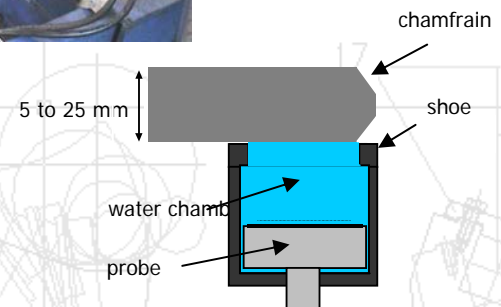
- 2 UT probes (single element)
- Multi-channel UT system
- Fully programmable settings
- Marking on coil for
 - Lamination detection
 - Loss of coupling
- Mechanical head and probe holder
- Data capture :
 - First printout : produce scanning information for each probe
 - Second printout : summary and full report, traceability for a complete coil for each defect or loss of coupling
 - Storing on CD-Rom
 - Network link



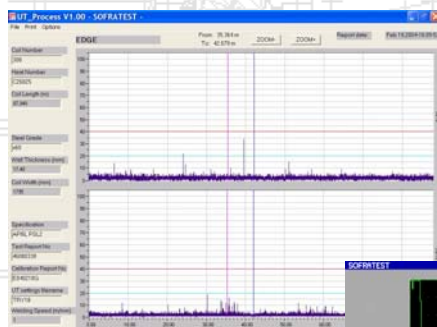
Mechanical System and Remote Control

Meets specifications :

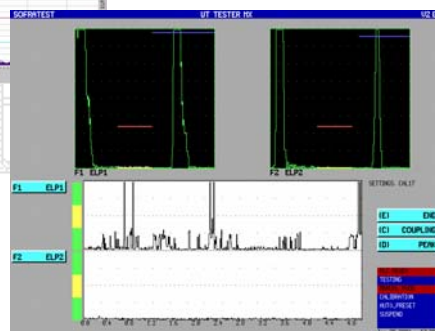
API 5L 2000
ISO 3183-3
ARAMCO
.....



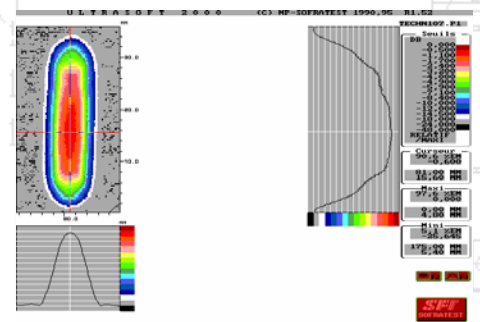
- Single crystal probe : near surface resolution is better than 25% of the thickness.
- 25mm minimum of the edge coil tested
- Edge lamination testing detects a 6.3mm flat bottom hole at 1/2 plate thickness
- Coupling stability control on each shot



PC_Process for Strip Edge Inspection with 2 channels



UTTMX Software Multi-channel UT system event envelope linked to mill speed



1 FBH Ø 6.3mm at different depth in a 25mm thick plate.

Environment

The UT system is designed to be placed very close to possible noise sources (Plasma cutters, welding machines, frequency inverters...).

The possible electromagnetic interference peaks are lowered and not detected. Besides, the system can operate in difficult conditions (room temperature up to 50°C and humidity up to 98%)

KCU054B